

RY-G1 Multi jet Dry type Water Meter

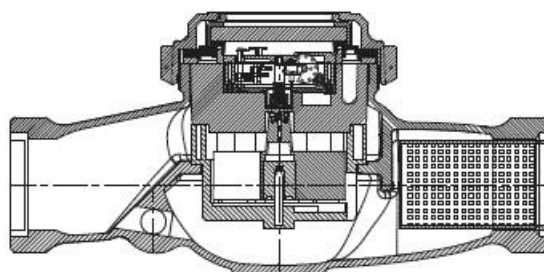


MI-001
OIML R 49



GENERAL

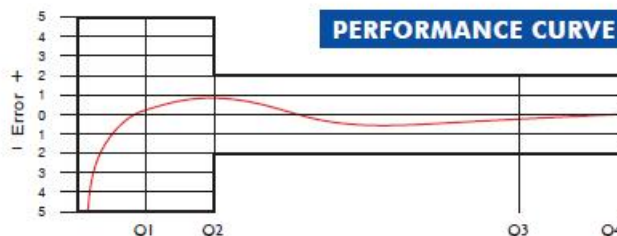
- MID Certificated • Impeller chamber strainer (Optional)
- Multijet principle assures a long service time
- Low head loss • Suitable for potable water
- 360° rotating lid
- Good sensitivity in initial starting
- Vacuum mechanism
- Electrostatic painted body made of corrosion resistant brass
- Body internally/externally e/p powder painted
- Available for optical reading • Non return valve
- Pulse output and AMR reading features are optional
- 3 years of warranty • Almost no maintenance
- Suitable for cold water up to 60°C
- Stainless steel register cup is optional
- Service and spare parts available for 10 years



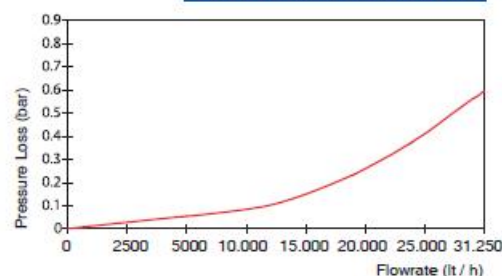
PERFORMANCE DATA

Permanent Flowrate	Q3	(m ³ /h) : 25
Overload Flowrate	Q4	(m ³ /h) : 31.25
Transitional Flowrate	Q2	(m ³ /h) : 0.25
Minimum Flowrate	Q1	(m ³ /h) : 0.15625
Initial Flowrate	Qi	(l/h) : 20
Maximum Working Pressure		(bar) : 16
Maximum Working Temperature		(°C) : 60
Q3/Q1 (MI-001 OIML R49)		: 160
Pressure Loss		(bar) : 0.6
Maximum Registration Capacity		(m ³) : 99999
Smallest Reading Resolution		(m ³) : 0.00005
Mounting on the network		: Horizontal
Unit weight		(kg) : 5.16
Package Weight (without connections)		(kg) : 22.10
Package Weight (with connections)		(kg) : 28.57
Quantity per package		: 4
Package dimensions		(cm) : 33.5x36.5x36.5

PERFORMANCE CURVE



PRESSURE LOSS CURVE



DIMENSIONS

Nominal diameter	DN	50	mm
Connecting diameter	D	21/2	B
Total overall meter height	H	154	mm
Axis height	h	50	mm
Length	L	300	mm
Width	B	142	mm
Length with connections	LB	429	mm

