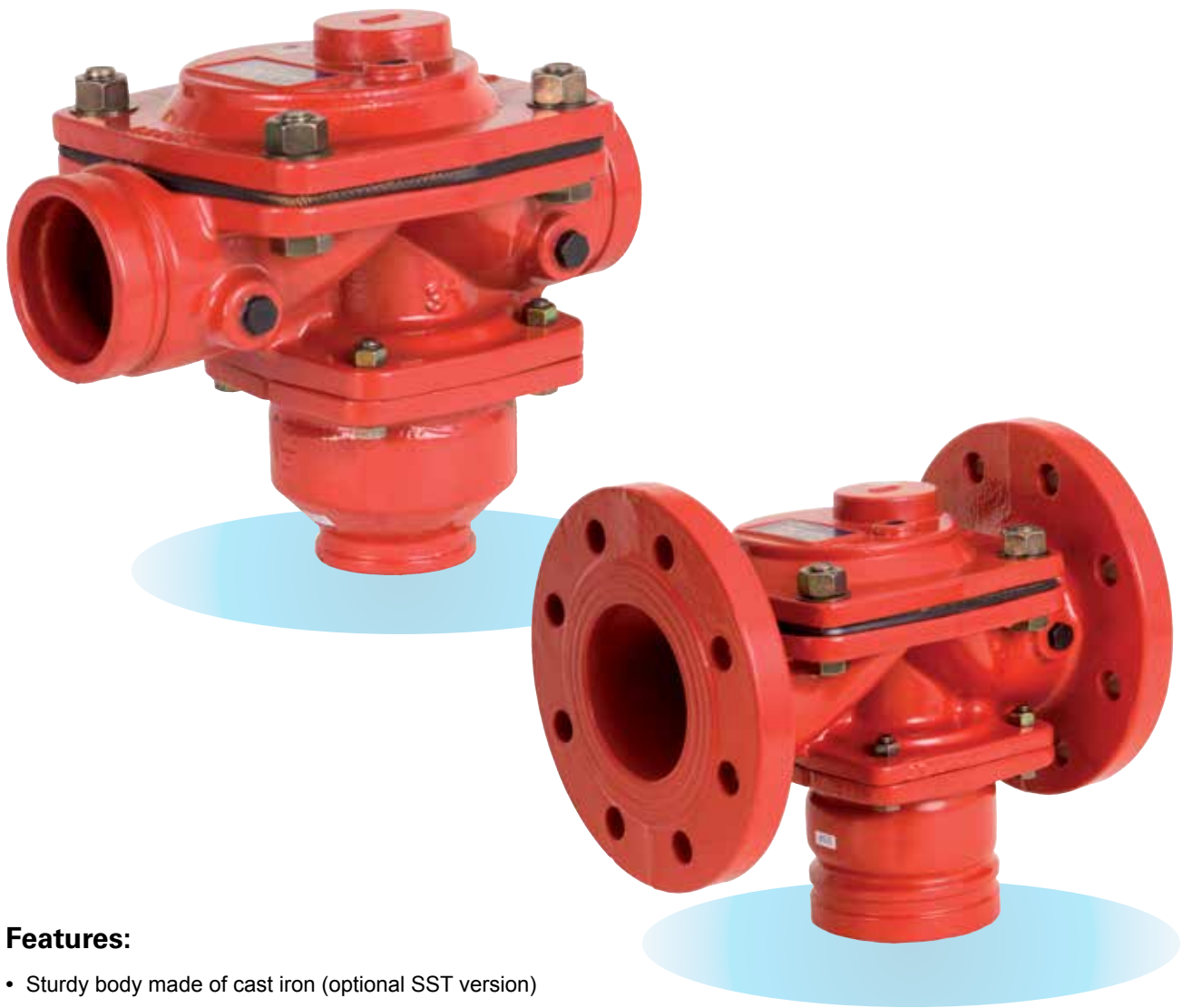


Dorot Model 57 & 58 "FlushGAL" Back Flushing Valve

Cast iron body, Direct Diaphragm-Sealing valve,
designed for automatic back-flush of filtration filters



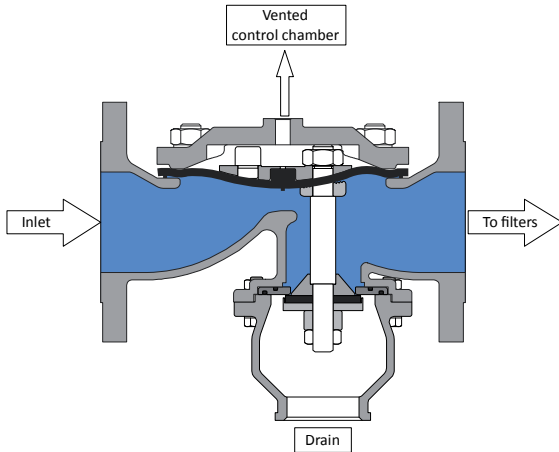
Features:

- Sturdy body made of cast iron (optional SST version)
- Frictionless position exchange
- Low head-losses
- Easy installation, no special tools or expertise required.
- Grooved (model 58) or flanged (model 57) connections available
- Special design model for disc filtration systems
- Optional model for high-pressure filtration systems available

Operating principle:

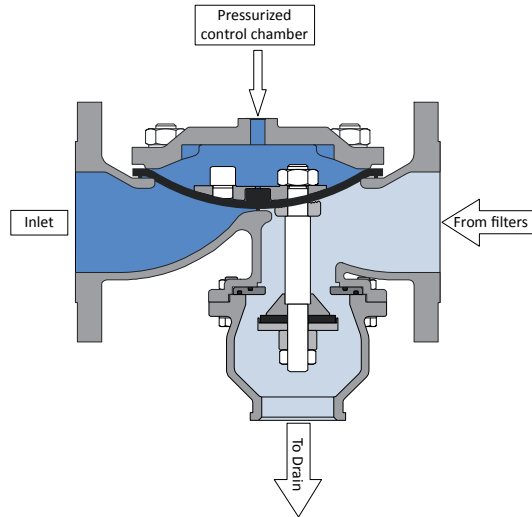
Filtration mode

De-pressurized command - control chamber vents to atmosphere:
The valve allows straight flow. Bottom drain plug is closed.



Back-Flushing mode

Pressure command - control chamber is pressurized:
The valve inlet port is closed by the diaphragm and the bottom port opens to allow flow from the filter, out to the drain.

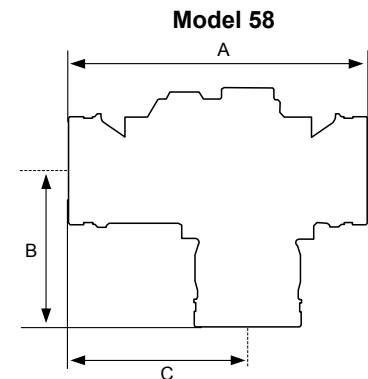
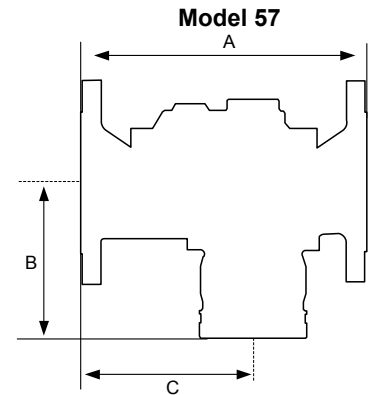


Dimensions:

	Inlet / Outlet		Drain		Dimensions mm / inch			Weight Kg / Lbs
	mm	inch	mm	inch	A	B	C	
57	80	3	50	2	289 / 11 ³ / ₈	158 / 6 ¹ / ₄	176 / 6 ¹⁵ / ₁₆	22 / 48
	100	4	80	3	305 / 12 ³ / ₁₆	161 / 6 ⁷ / ₁₆	184 / 7 ⁵ / ₁₆	25 / 55
58	80	3	50	2	287 / 11 ⁵ / ₁₆	152 / 6	175 / 6 ⁷ / ₈	15 / 33
	100	4	80	3	323 / 12 ¹¹ / ₁₆	167 / 6 ⁹ / ₁₆	194 / 7 ⁵ / ₈	18 / 40

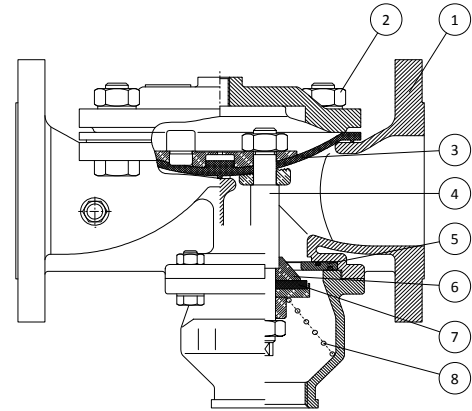
End connections:

Inlet / Outlet ports	Model 57 - Flanged Model 58 - Grooved
Drain ports	Grooved or Female-threaded
In 4x3 models	Internal 3" / 80mm thread and external Grooved 4" / 100mm connection
Flange standards	ISO 2084 / ANSI B16 / BSTD (others on request)
Thread standards	Female NPT / BSP



Materials:

Part	Material	Optional materials
1. Body & Cover	Cast Iron	SST
2. Bolts & nuts	Coated Steel	SST
3. Diaphragm	NR	NBR, EPDM, ALD or other
4. Shaft	SST 303	
5. Seat	Brass	SST
6. Plug cone	Brass	SST
7. Seal	NR	NBR, EPDM, ALD or other
8. Spring (optional)	SST 302	



Hydraulic performance:

Model		57 / 58	
Size		3 X 2	4 X 3
Max. recommended flow at filtration mode	m ³ /h	90	160
	gpm	400	705
Max. recommended flow at back-flushing mode	m ³ /h	40	90
	gpm	180	400
Flow rate factor at filtration mode	Kv (metric)	130	160
	Cv (US)	150	185
Flow rate factor at back-flushing mode	Kv (metric)	58	70
	Cv (US)	67	81

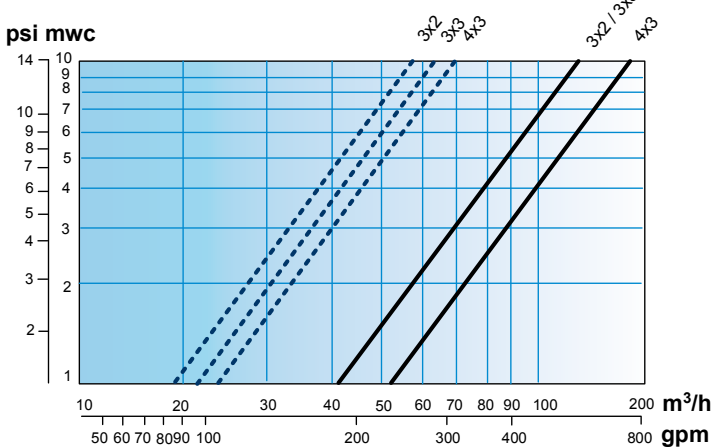
Operating pressure range:

Standard model: 0.7 - 10 bar / 10 - 150 psi

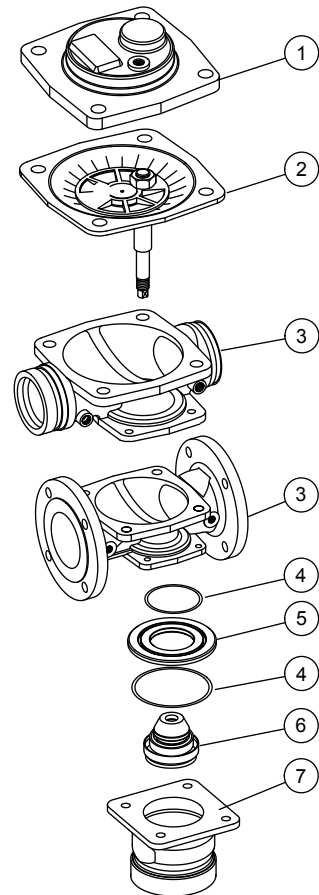
High pressure model: 1 - 16 bar / 15 - 250 psi

Maximum operating temperature: 60°C (140°F)

Head loss chart:



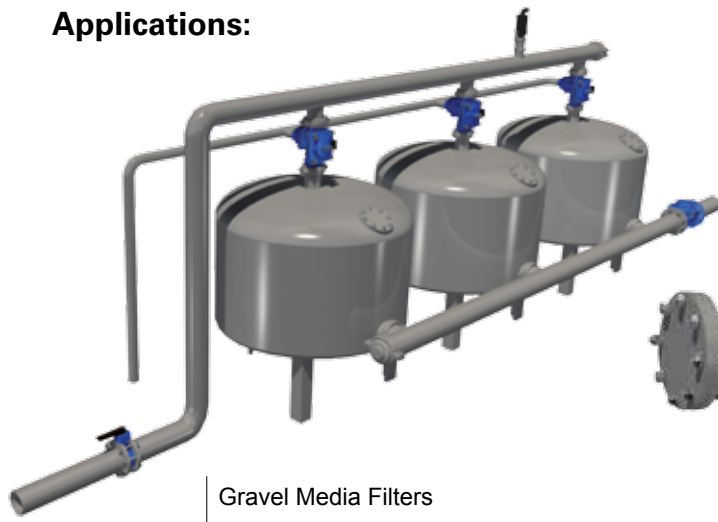
Filtration mode —————
 Flushing mode - - - - -



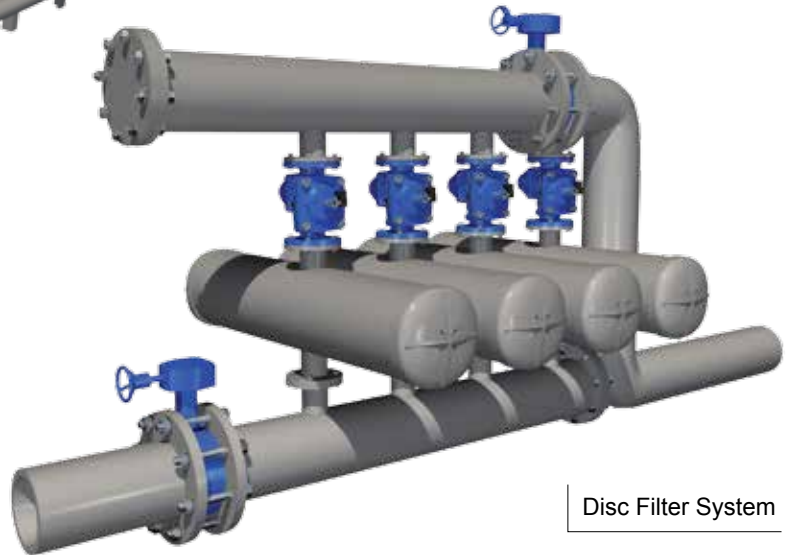
Main parts:

1. Bonnet
2. Diaphragm kit
3. Body
4. Sealing ring
5. Seat
6. Plug
7. Adapter

Applications:



Gravel Media Filters



Disc Filter System

Ordering guide:

Ordering data		Ordering code								Ordering data		
	5☐	☐	X	☐	☐☐	☐	☐	☐☐				
Main ports connections												
Flanged	7											
Grooved (VIC)	8											
Main Ports Size												
3" / 80mm	→	3										
4" / 100mm	→	4										
Drain Port Size												
2" / 50mm	→	2										
3" / 80mm	→	3										
4" / 100mm *	→	4										
Main Ports Connections Standard												
ISO PN16	→		I1									
ANSI 125	→		A1	V								
BS TD / AS TD	→		BD	B								
Grooved	→		VI	N								
										Special Features		
										HP	High Pressure (1-16 bar)	
										SK	Spin-Klin version	
											Coating	
										R	←	Polyester Red
										L	←	Polyester Blue
										X	←	Other (Specify)
											Drain Port Connection Standard	
											←	Grooved (VIC)
											←	** BSP Thread
											←	*** NPT Thread

* only available for the 58 model
 ** only available for ISO / BSTD / ASTD
 *** only available for ANSI